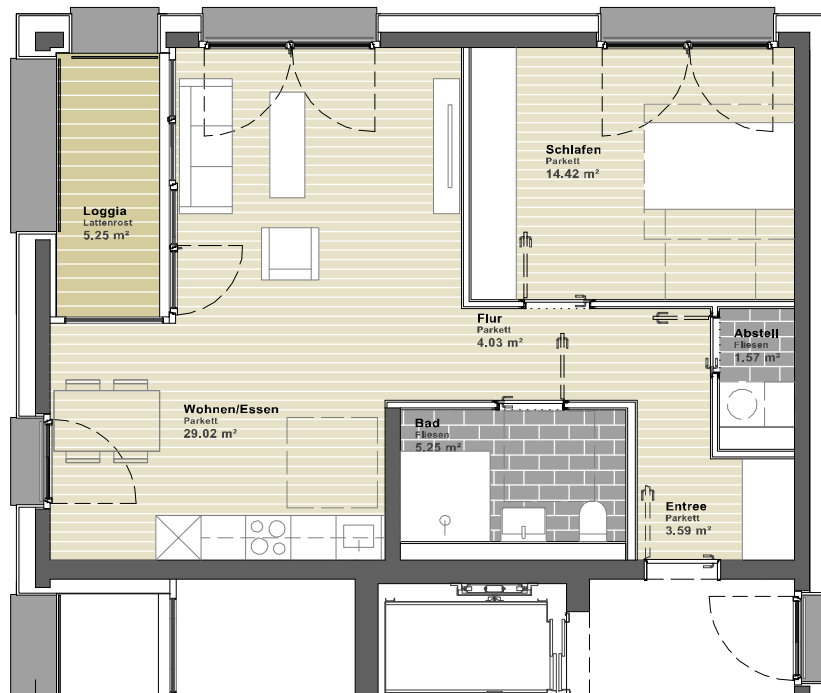


# DICHTER4



## TOP D-04-01

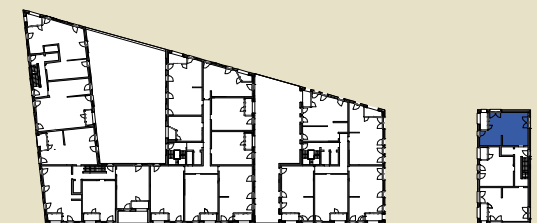
4.OG

Entrée	3,59 m <sup>2</sup>
Flur	4,03 m <sup>2</sup>
Abstellraum	1,57 m <sup>2</sup>
Bad	5,25 m <sup>2</sup>
Schlafzimmer	14,42 m <sup>2</sup>
Wohnen/Essen	29,02 m <sup>2</sup>

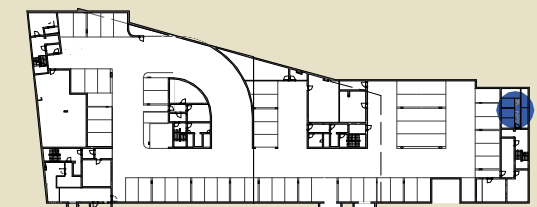
## Gesamt

57,88 m<sup>2</sup>

Loggia	5,25 m <sup>2</sup>
Lager	5,68 m <sup>2</sup>



Übersicht | Wohnung



Übersicht | UG Lager



0 1 3 m  
1 : 100